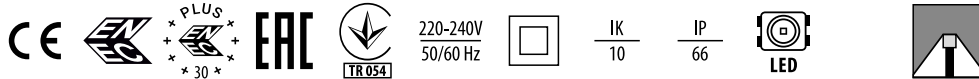


Group in catalogue: PARK LUMINAIRES



Park luminaire in modern form for LED light sources.

TECHNICAL DATA**Mounting:** on pillar ø48/60/76mm, with mounting bracket (included)**Body:** high pressure die-cast aluminum**Lateral Surface Wind Exposed:** 0,088 m²**Colour:** graphite, gray**Diffuser:** polycarbonate**ELECTRICAL DATA****Power supply efficiency:** >89%**Power:** 220-240V 50/60Hz**Includes light source:** yes**Type of equipment:** DALI, ED**Electrical connection:** luminaire equipped with 4x1,5 mm² wire with a length of 6 m (II class), luminaire equipped with 2x1,5 mm² wire with a length of 6 m (II class)**OPTICAL DATA****Light distribution:** symmetrical-elliptic, omnidirectional**Way of lighting:** direct**Type of optic:** O18 - for pedestrian zones, O19 - for recreational areas, O20 - for parks and parking lots, O21 - for bike paths, O22 - for pedestrian zones, O23 - for recreational areas, O24 - for parks and parking lots, O25 - for bike paths, O28 - for pedestrian zones, O29 - for recreational areas, O30 - for parks and parking lots, O31 - for bike paths**GENERAL DATA****Lifetime (L90B10):** 100 000 h**Available on request:** LLOC, twilight sensor, 10kV surge protection, NTC, NEMA connector, ZHAGA connector**Warranty:** 5 years**Application:** cycle paths, avenues, sidewalks, parks, residential, public spaces, playgrounds, promenade, residential area roads**Additional information:** photobiological risk group RG0**Other remarks:** the pole is not part of the luminaire

Code	Luminaire power [W]	Lumen luminaire [lm]	Efficacy [lm/W]	Colour temperature [K]	CRI/Ra	Operating temperature range [°C]
Type: Standard luminaire - O18, O19, O20, O21 optics						
13027X.XL012.XX1	18	2200	122	3000	>70	-40 ... +55
13027X.XL022.XX1	18	2300	128	4000	>70	-40 ... +55
13027X.XL042.XX1	25	3000	120	3000	>70	-40 ... +55
13027X.XL052.XX1	25	3200	128	4000	>70	-40 ... +55
13027X.XL072.XX1	35	4000	114	3000	>70	-40 ... +50
13027X.XL082.XX1	35	4200	120	4000	>70	-40 ... +50
Type: Standard luminaire - O22, O23, O24, O25 optics						
13027X.XL102.XX1	35	4450	127	3000	>70	-40 ... +50
13027X.XL112.XX1	35	4600	131	4000	>70	-40 ... +50
13027X.XL132.XX1	49	6050	123	3000	>70	-40 ... +45
13027X.XL142.XX1	49	6350	130	4000	>70	-40 ... +45
Type: Standard luminaire - O28, O29, O30, O31 optics						
13027X.XL152.XX1	19	2400	126	3000	>70	-40 ... +50
13027X.XL162.XX1	19	2650	139	4000	>70	-40 ... +50
13027X.XL172.XX1	26	3400	131	3000	>70	-40 ... +50
13027X.XL182.XX1	26	3750	144	4000	>70	-40 ... +50
13027X.XL192.XX1	36	4500	125	3000	>70	-40 ... +50
13027X.XL202.XX1	36	4950	138	4000	>70	-40 ... +50
Type: Modern hat - O18, O19, O20, O21 optics						

Luminous flux tolerance +/- 10%.

Power tolerance +/- 5%.

Please note that the standard luminaire is not intended for use in an environment with a high degree of salinity. If it is required to adapt the luminaire to work in such an environment, please contact our Sales Department to confirm the possibility of using an additional protective coating.

Up-to-date product info and General Warranty Terms available on our website www.luglightfactory.com

Detailed information on luminous fluxes and powers for individual indexes are indicated on the product data sheet.

The parameters in the data sheet are given for Ta=25°C.

The operating temperature ranges apply only to luminaires used in the outdoor environment.

Colour temperature tolerance +/- 5%.

Code	Luminaire power [W]	Lumen luminaire [lm]	Efficacy [lm/W]	Colour temperature [K]	CRI/Ra	Operating temperature range [°C]
Type: Modern hat - O18, O19, O20, O21 optics						
13027X.XL012.XX1.846	18	2200	122	3000	>70	-40 ... +55
13027X.XL022.XX1.846	18	2300	128	4000	>70	-40 ... +55
13027X.XL042.XX1.846	25	3000	120	3000	>70	-40 ... +55
13027X.XL052.XX1.846	25	3200	128	4000	>70	-40 ... +55
13027X.XL072.XX1.846	35	4000	114	3000	>70	-40 ... +50
13027X.XL082.XX1.846	35	4200	120	4000	>70	-40 ... +50
Type: Modern hat - O22, O23, O24, O25 optics						
13027X.XL102.XX1.846	35	4450	127	3000	>70	-40 ... +50
13027X.XL112.XX1.846	35	4600	131	4000	>70	-40 ... +50
13027X.XL132.XX1.846	49	6050	123	3000	>70	-40 ... +45
13027X.XL142.XX1.846	49	6350	130	4000	>70	-40 ... +45
Type: Modern hat - O28, O29, O30, O31 optics						
13027X.XL152.XX1.846	19	2400	126	3000	>70	-40 ... +50
13027X.XL162.XX1.846	19	2650	139	4000	>70	-40 ... +50
13027X.XL172.XX1.846	26	3400	131	3000	>70	-40 ... +50
13027X.XL182.XX1.846	26	3750	144	4000	>70	-40 ... +50
13027X.XL192.XX1.846	36	4500	125	3000	>70	-40 ... +50
13027X.XL202.XX1.846	36	4950	138	4000	>70	-40 ... +50

13027 . L012 . 1

Type of optic

- 01 O18 - for pedestrian zones
- 02 O19 - for recreational areas
- 03 O20 - for parks and parking lots
- 04 O21 - for bike paths
- 05 O22 - for pedestrian zones
- 06 O23 - for recreational areas
- 07 O24 - for parks and parking lots
- 08 O25 - for bike paths
- 11 O28 - for pedestrian zones
- 12 O29 - for recreational areas
- 13 O30 - for parks and parking lots
- 14 O31 - for bike paths

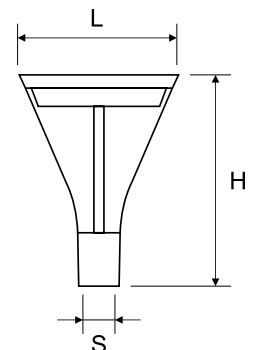
Type of equipment

- 5 ED
- 3 DALI

Colour

- 2 gray
- 5 graphite

Code	Dimensions [mm] LH	Mounting dimensions [mm] ØS	Pallet quantity	Quantity in package	Net weight [kg]
Type: Standard luminaire - O18, O19, O20, O21 optics					
13027X.XL012.XX1	360 482	76	18	1	4.4
13027X.XL022.XX1	360 482	76	18	1	4.4
13027X.XL042.XX1	360 482	76	18	1	4.4
13027X.XL052.XX1	360 482	76	18	1	4.4
13027X.XL072.XX1	360 482	76	18	1	4.4
13027X.XL082.XX1	360 482	76	18	1	4.4
Type: Standard luminaire - O22, O23, O24, O25 optics					
13027X.XL102.XX1	360 482	76	18	1	4.4
13027X.XL112.XX1	360 482	76	18	1	4.4



Luminous flux tolerance +/- 10%.

Power tolerance +/- 5%.

Please note that the standard luminaire is not intended for use in an environment with a high degree of salinity. If it is required to adapt the luminaire to work in such an environment, please contact our Sales Department to confirm the possibility of using an additional protective coating.

Up-to-date product info and General Warranty Terms available on our website www.luglightfactory.com

Detailed information on luminous fluxes and powers for individual indexes are indicated on the product data sheet.

The parameters in the data sheet are given for Ta=25°C.

The operating temperature ranges apply only to luminaires used in the outdoor environment.

Colour temperature tolerance +/- 5%.

Code	Dimensions [mm] L H	Mounting dimensions [mm] ØS	Pallet quantity	Quantity in package	Net weight [kg]
Type: Standard luminaire - O22, O23, O24, O25 optics					
13027X.XL132.XX1	360 482	76	18	1	4.4
13027X.XL142.XX1	360 482	76	18	1	4.4
Type: Standard luminaire - O28, O29, O30, O31 optics					
13027X.XL152.XX1	360 482	76	18	1	4.4
13027X.XL162.XX1	360 482	76	18	1	4.4
13027X.XL172.XX1	360 482	76	18	1	4.4
13027X.XL182.XX1	360 482	76	18	1	4.4
13027X.XL192.XX1	360 482	76	18	1	4.4
13027X.XL202.XX1	360 482	76	18	1	4.4
Type: Modern hat - O18, O19, O20, O21 optics					
13027X.XL012.XX1.846	665 486	76	12	1	6.1
13027X.XL022.XX1.846	665 486	76	12	1	6.1
13027X.XL042.XX1.846	665 486	76	12	1	6.1
13027X.XL052.XX1.846	665 486	76	12	1	6.1
13027X.XL072.XX1.846	665 486	76	12	1	6.1
13027X.XL082.XX1.846	665 486	76	12	1	6.1
Type: Modern hat - O22, O23, O24, O25 optics					
13027X.XL102.XX1.846	665 486	76	12	1	6.1
13027X.XL112.XX1.846	665 486	76	12	1	6.1
13027X.XL132.XX1.846	665 486	76	12	1	6.1
13027X.XL142.XX1.846	665 486	76	12	1	6.1
Type: Modern hat - O28, O29, O30, O31 optics					
13027X.XL152.XX1.846	665 486	76	12	1	6.1
13027X.XL162.XX1.846	665 486	76	12	1	6.1
13027X.XL172.XX1.846	665 486	76	12	1	6.1
13027X.XL182.XX1.846	665 486	76	12	1	6.1
13027X.XL192.XX1.846	665 486	76	12	1	6.1
13027X.XL202.XX1.846	665 486	76	12	1	6.1

OTHER PICTURES



Modern hat

ACCESSORIES



■ 150175.00983
□ 150172.00968

Cover masking ø48 mm



■ 150175.00982
□ 150172.00966

Cover masking ø60 mm

Luminous flux tolerance +/- 10%.

Power tolerance +/- 5%.

Please note that the standard luminaire is not intended for use in an environment with a high degree of salinity. If it is required to adapt the luminaire to work in such an environment, please contact our Sales Department to confirm the possibility of using an additional protective coating.

Up-to-date product info and General Warranty Terms available on our website www.luglightfactory.com

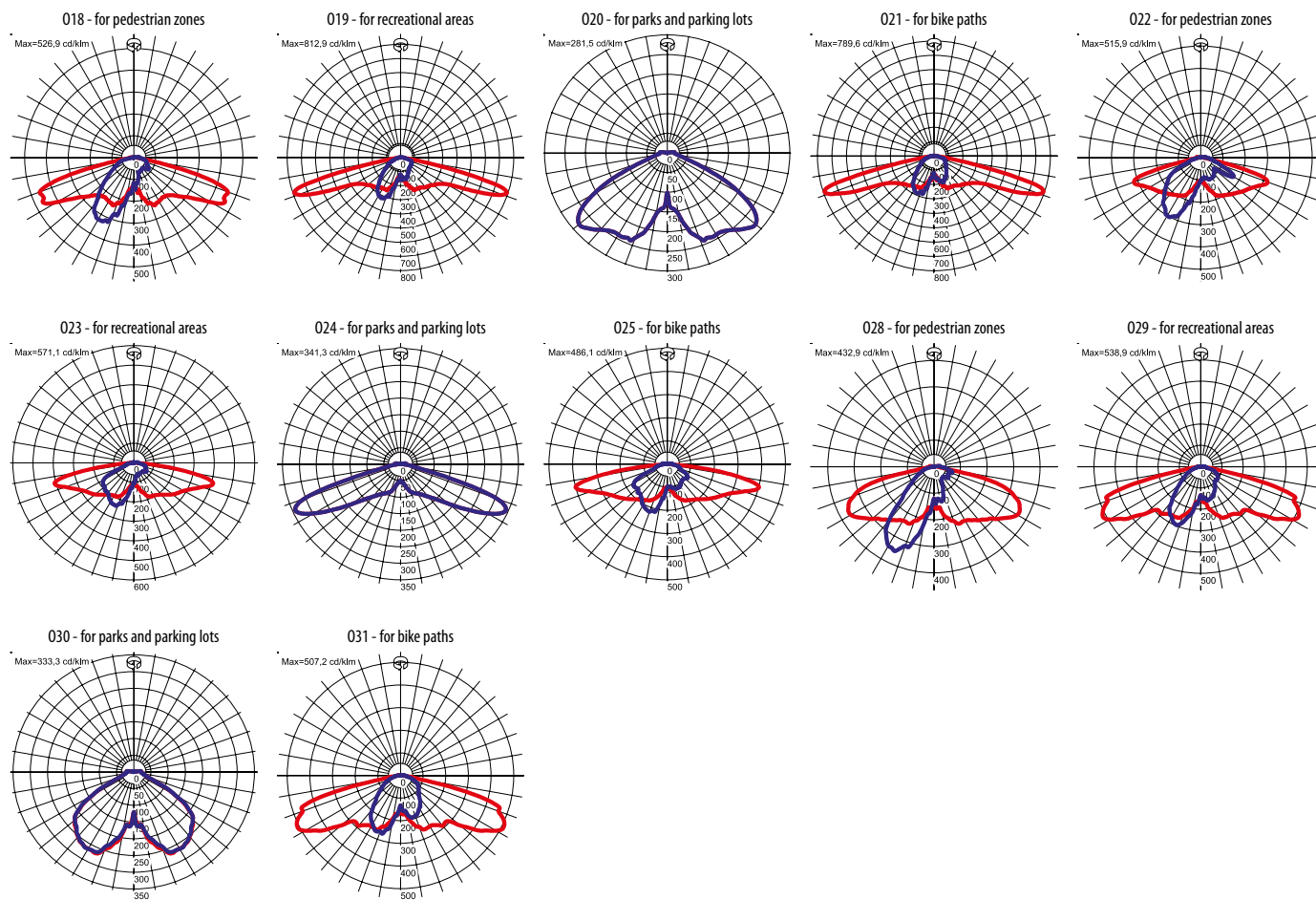
Detailed information on luminous fluxes and powers for individual indexes are indicated on the product data sheet.

The parameters in the data sheet are given for Ta=25°C.

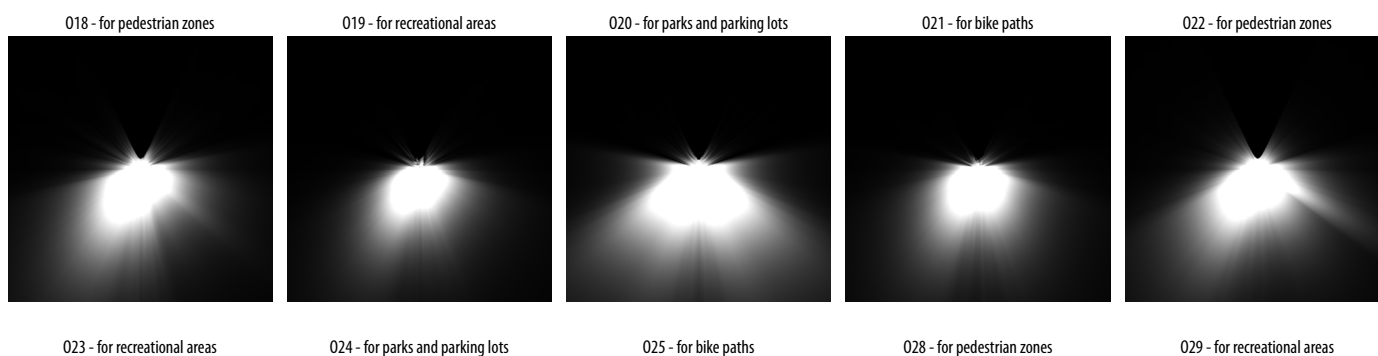
The operating temperature ranges apply only to luminaires used in the outdoor environment.

Colour temperature tolerance +/- 5%.

LIGHT BEAM CURVES



WAY OF LIGHTING



Luminous flux tolerance +/- 10%.

Power tolerance +/- 5%.

Please note that the standard luminaire is not intended for use in an environment with a high degree of salinity. If it is required to adapt the luminaire to work in such an environment, please contact our Sales Department to confirm the possibility of using an additional protective coating.

Up-to-date product info and General Warranty Terms available on our website www.luglightfactory.com

Detailed information on luminous fluxes and powers for individual indexes are indicated on the product data sheet.

The parameters in the data sheet are given for $T_a=25^{\circ}C$.

The operating temperature ranges apply only to luminaires used in the outdoor environment.

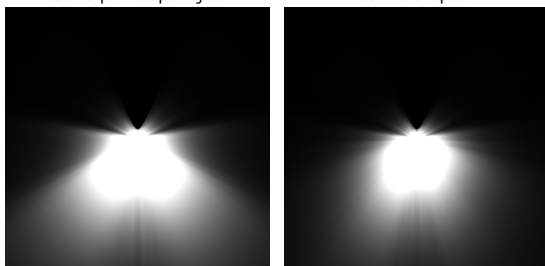
Colour temperature tolerance +/- 5%.

Group in catalogue: PARK LUMINAIRES

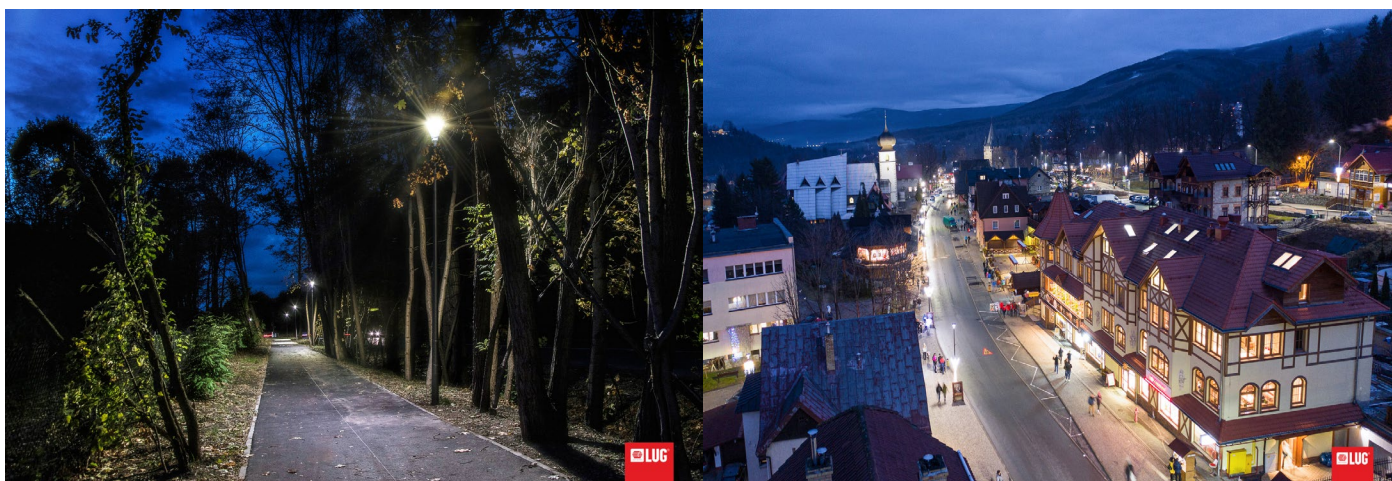


030 - for parks and parking lots

031 - for bike paths



OTHER PROJECTS



Łużycka, Zielona Góra, Poland

Karpacz, Poland

Luminous flux tolerance +/- 10%.

Power tolerance +/- 5%.

Please note that the standard luminaire is not intended for use in an environment with a high degree of salinity. If it is required to adapt the luminaire to work in such an environment, please contact our Sales Department to confirm the possibility of using an additional protective coating.

Up-to-date product info and General Warranty Terms available on our website www.luglightfactory.com

Detailed information on luminous fluxes and powers for individual indexes are indicated on the product data sheet.

The parameters in the data sheet are given for $T_a=25^{\circ}\text{C}$.

The operating temperature ranges apply only to luminaires used in the outdoor environment.

Colour temperature tolerance +/- 5%.