

PITBUL-Ex-LED

IP 65 / Ex zone 1, 21



FTZÚ 16 ATEX 0089X



Application: The dustproof lighting fixture PITBUL-Ex-LED with splash water resistance is designed for lighting of areas with danger of explosion. The lighting fixture is certified by FTZU Ostrava-Radvanice (certificate type FTZU 16 ATEX 0089X).

Ballast: EP – electronic 110 – 254 V, 50/60 Hz, 220 – 250 V, 0 Hz DC

Light source: LED, 4000K, CRI +80

Housing: White painted steel sheet RAL 9003

Diffuser: Opal hardened safety glass with HST test

Fastening: Direct surface wall or ceiling mounting via M8 screws through the base, with ceiling brackets or adjustable brackets, suspension via suspension brackets, into false ceiling by means of recessed frame, on the pole with set of pole brackets.

Connection: Screwless three-pole terminal block, maximum diameter of wires 4 mm²

Standard equipment: 1pc EX plastic cable gland M20x1,5 for diameter of cable 7-12mm, 1pc EX plastic sealing plug

Calculated lifetime – LED modules: L80B50 ta55°C - 50 000h - 418/436
L80B50 ta 60°C - 50 000h - 218/236

PITBUL-Ex-LED

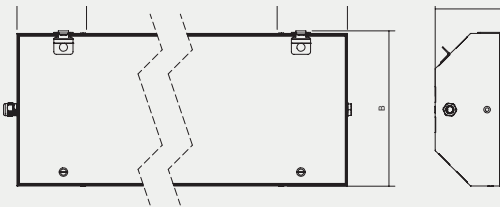
Ⓜ II 2G Ex db eb mb op is IIC T4 Gb

Ⓜ II 2D Ex tb op is IIC T67°C Db

PITBUL-Ex-LED-WOD

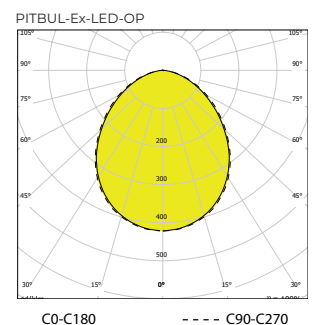
Ⓜ II 2G Ex eb mb op is IIC T4 Gb

Ⓜ II 2D Ex tb op is IIC T67°C Db

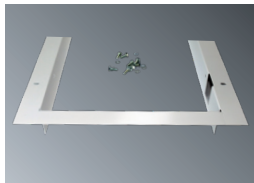


Order number	Name	Lighting fixture luminous flux (lm)	Power input (W)	Rated power output (lm/W)	Ta max (°C)	Dimensions of lighting fixture A x B x C (mm)	Mounting spacing D (mm)	Equivalent*	Weight (kg)
053684	PITBUL-Ex-LED-OP-D-2750-218-4K	2377	16	149	60	703x310x142	450	3x18W	7,7
053700	PITBUL-Ex-LED-OP-D-4000-218-4K	3373	30	112	60	703x310x142	450	4x18W	7,7
053685	PITBUL-Ex-LED-OP-D-5500-418-4K	4695	30	157	55	703x369x142	450	2x36W	10,3
053701	PITBUL-Ex-LED-OP-D-8000-418-4K	6663	51	131	55	703x369x142	450	X	10,3
053686	PITBUL-Ex-LED-OP-D-5500-236-4K	4784	30	159	60	1313x310x142	800	X	15,1
053702	PITBUL-Ex-LED-OP-D-8000-236-4K	6742	53	127	60	1313x310x142	800	2x58W/3x36W	15,1
053687	PITBUL-Ex-LED-OP-D-11000-436-4K	9546	60	159	55	1313x369x142	800	3x58W	19,4
053703	PITBUL-Ex-LED-OP-D-16000-436-4K	13447	102	132	55	1313x369x142	800	4x58W	19,4
053680	PITBUL-Ex-LED-OP-WOD-2750-218-4K	2377	16	149	60	703x310x142	450	3x18W	7,7
053696	PITBUL-Ex-LED-OP-WOD-4000-218-4K	3373	30	112	60	703x310x142	450	4x18W	7,7
053681	PITBUL-Ex-LED-OP-WOD-5500-418-4K	4695	30	157	55	703x369x142	450	2x36W	10,3
053697	PITBUL-Ex-LED-OP-WOD-8000-418-4K	6663	51	131	55	703x369x142	450	X	10,3
053682	PITBUL-Ex-LED-OP-WOD-5500-236-4K	4784	30	159	60	1313x310x142	800	X	15,1
053698	PITBUL-Ex-LED-OP-WOD-8000-236-4K	6742	53	127	60	1313x310x142	800	2x58W/3x36W	15,1
053683	PITBUL-Ex-LED-OP-WOD-11000-436-4K	9546	60	159	55	1313x369x142	800	3x58W	19,4
053699	PITBUL-Ex-LED-OP-WOD-16000-436-4K	13447	102	132	55	1313x369x142	800	4x58W	19,4

Tolerance of luminous flux and power input of the lighting fixture +/- 10%
* Luminaires are not a direct replacement. They may vary in length. The required lighting of the room must be verified by calculation.



Accessories on request



053941	Set of recessed frame PITBUL 1x-3x18W
053942	Set of recessed frame PITBUL 4x18W
053943	Set of recessed frame PITBUL 1x-3x36W
053944	Set of recessed frame PITBUL 4x36W
053945	Set of recessed frame PITBUL 1x-3x58W
053946	Set of recessed frame PITBUL 4x58W



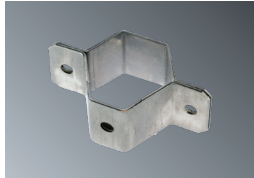
054935	Set of stainless steel ceiling brackets PITBUL (2 pcs)
--------	--



053940	Set of adjustable brackets PITBUL
--------	-----------------------------------



004642	Suspension bracket DIN 580 M8 - 1 pc
--------	--------------------------------------



051146	Pole bracket PITBUL (for Ø 50 mm)
--------	-----------------------------------

Accessories for armoured cable M20

008052	Cable gland BIMED M20x1.5 ORION UNIVERSAL (8+/- 0.5Nm)
008091	Sealing plug WISKA EMVS20 M20x1.5 Ex-nickel-plated brass
008093	Nut WISKA EMMU20 M20x1.5 - nickel-plated brass
007047N	Flat sealing ring EPDM 27x18.5x1.5 mm

Accessories for armoured cable M25

008056	BIMED KBA 2M(25) Brass M25x1.5
008089	Plastic Ex sealing plug M25x1.5
008035	Nut WISKA EMMU25 M25x1.5 - nickel-plated brass
007075	Flat sealing ring EPDM 32x23.5x1.5 mm

Accessories M25

008061	Cable gland OBO V-TEC EX M25x1.5 - 2050331 (5.0 Nm)
008089	plastic Ex sealing plug M25x1.5
008102	Plastic nut WISKA EMUG 25 M25x1.5 black
007075	Flat sealing ring EPDM 32x23.5x1.5 mm

Nickel-plated accessories M20

008092	Cable gland WISKA EMSKE20 M20x1.5 Ex-nickel-plated brass (8 Nm)
008093	Nut WISKA EMMU20 M20x1.5 - nickel-plated brass
008091	Sealing plug WISKA EMVS20 M20x1.5 Ex-nickel-plated brass
007047N	Flat sealing ring EPDM 27x18.5x1.5 mm

Lighting fixture detail



008052,008056



008092



008061

Marking system and overview of approved variants of lighting fixtures

PITBUL-Ex-LED-XXXX-YYY-WOD	- without disconnecter
PITBUL-Ex-LED-XXXX-YYY-D	- with disconnecter
PITBUL-Ex-LED-XXXX-YYY-2D	- single-phase through wiring connection
PITBUL-Ex-LED-XXXX-YYY-1F	- three-phase through wiring connection
PITBUL-Ex-LED-XXXX-YYY-3F	- three phase continuous connection

XXXX indicates luminous flux intensity 4000/8000/16000
 YYY indicates type of lighting fixture housing
 218/236/418/436

On request

EM-1.5/3 - non-maintained emergency lighting

1/3 F - single-phase or three phase through wiring connection, maximum diameter of wires 4 mm²

MULTI-1.5/3 - maintained emergency lighting

RAL - another colour scale

NEREZ - body from stainless steel AISI 304 or AISI 316

(in case of STAINLESS STEEL version its declared for ambient temperature decreased about 5-10°C)

3000/4000/6000K - colour temperature

Stadard order number	MULTI-1,5H	MULTI-3H	DALI	1F	3F	FROST*	EM	
053700	053708	053704	X	053700 1F	053700 3F	053690	053712	PITBUL-Ex-Em-LED-OP-600-218-4K
053701	053709	053705	X	053701 1F	053701 3F	053691	053713	PITBUL-Ex-Em-LED-OP-900-236-4K
053702	053710	053706	X	053702 1F	053702 3F	053692	053714	PITBUL-Ex-Em-LED-OP-400-218-4K
053703	053711	053707	X	053703 1F	053703 3F	053693	053715	PITBUL-Ex-Em-LED-OP-500-236-4K

* lighting fixtures suitable for ambient temperatures -40°C

Use of lighting fixtures in areas with danger of explosion	Marking of external influences	Area classification	
		Marking	Directive
Danger of explosion of flammable dust	BE3N1	ZONE 21.22	ČSN EN 60079-14, ČSN EN 60079-10-2
Danger of explosion of flammable gases and vapours	BE3N2	ZONE 1.2	ČSN EN 60079-14, ČSN EN 60079-10-1