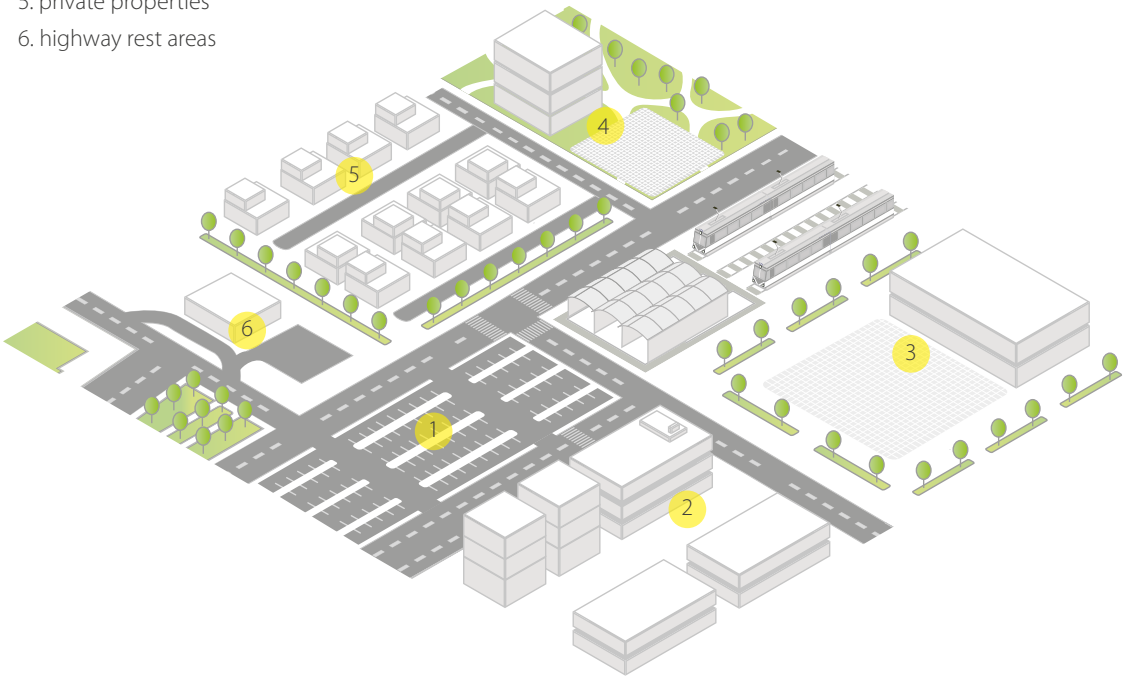


# KARIN EV LED

- charging station integrated into a lighting column
- charging electric vehicles in Mode 3 with power up to 22kW
- charging socket in accordance with IEC62196 Type-2
- compliance with the OCPP protocol ensuring the effectiveness of authorization and billing
- simple and intuitive operation
- charger status indication
- energy-saving and ecological light sources
- light source life-time of L90F10 - 50 000h, L80F20 - 100 000h
- modern and decorative design
- resistance to corrosion and harmful external factors
- wide luminaire operating temperature range from -40°C to + 40°C

## Application

1. parking lots in public spaces
2. office buildings surrounding
3. shopping centers
4. hotels and restaurants
5. private properties
6. highway rest areas



# Features



## Possibility of integration with a billing system

Open OCPP v.1.6 protocol

### Communication

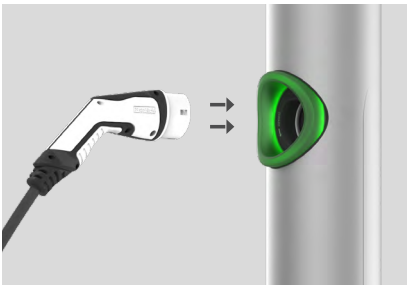
4G or Ethernet

## LED module

light temperature 5000K, 4000K, 3500K or 2700K

Frosted diffuser made of PMMA

## Safe and intuitive charging process



## Charger status indication - RGB module

green colour - charging point is available  
blue colour - charging point is occupied  
red colour - charging point is inactive



## Electricity meter in accordance with MID directive

## The wiring chamber is locked with a key



## Anodised aluminum body

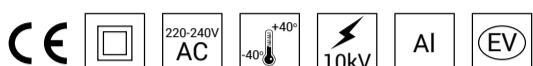
available in 10 colours, each with possibility of chemical brightening with anti-corrosive and decorative properties



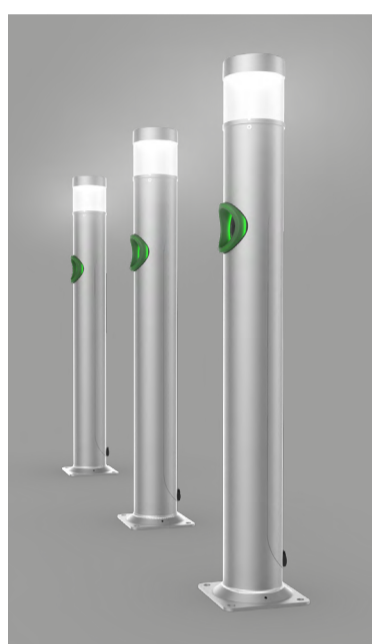


# KARIN EV LED

KARIN EV LED is an esthetic combination of a KARIN LED compact lighting bollard with the functionality of an intelligent charging system for electric vehicles. Column is made of aluminum protected with anodic coating. The use of high-quality LEDs ensures even and efficient lighting. The charging system is supported by Open Charge Point Protocol (OCPP) ensuring the effectiveness of authorization and billing.<sup>1</sup>



## 2in1 LED lighting Vehicle charging



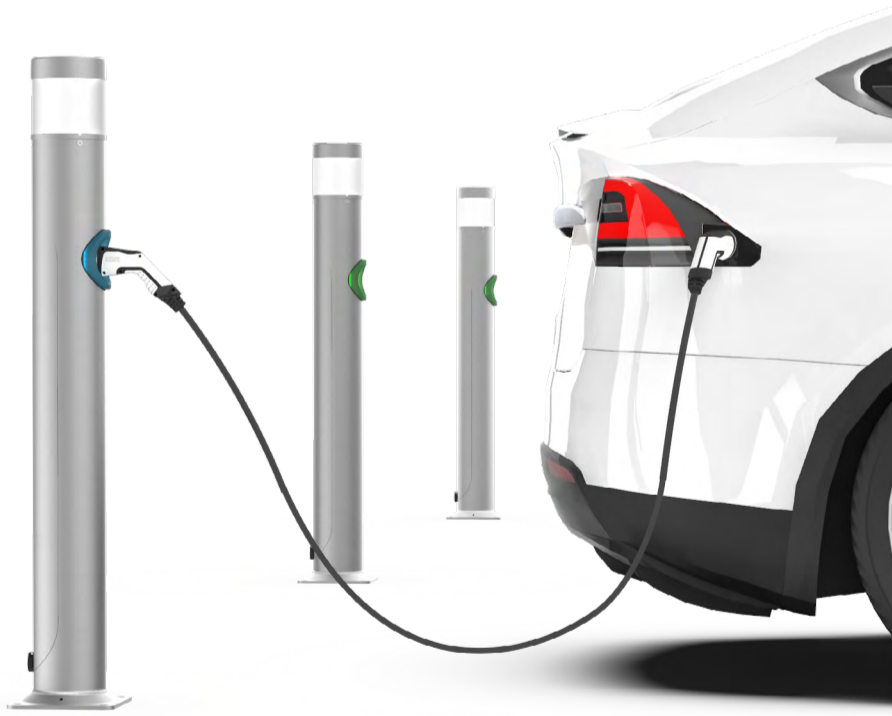
LED lighting columns



Electric vehicle charging point

## Safe and intuitive charging process

The system provides easy and safe charging process. The socket is equipped with a shutter that closes and protects the electrical contents when the cable is not connected. The voltage at the socket is only applied after the charging process has been initiated.



## The KARIN LED column family

