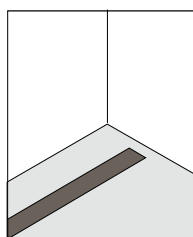


Struttura in alluminio estruso, schermo in vetro temperato piano (8mm) e viteria in acciaio inox A4. Disponibile in 3 versioni: 610mm (potenza 13,7W), 910mm (potenza 20,5W) e 1210mm (potenza 27,4W) nelle tonalità bianco caldo 3000K o bianco naturale 4000K. Grado di protezione IP67. Connettore rapido incluso IP67.

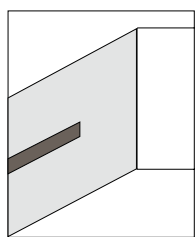
Testate, giunti, cassaforme e driver da ordinare separatamente come accessori.

Body made of extruded aluminium, 8mm tempered flat glass diffuser and A4 stainless steel screws. Available in 3 versions: 610mm (power 13,7W), 910mm (power 20,5W) and 1210mm (power 27,4W) in the colour temperature 3000K warm white and 4000K natural white. IP67. Rapid connector IP67 is included.

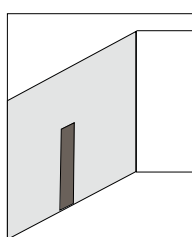
End caps, joints, recessed housings and driver have to be ordered separately as accessories.



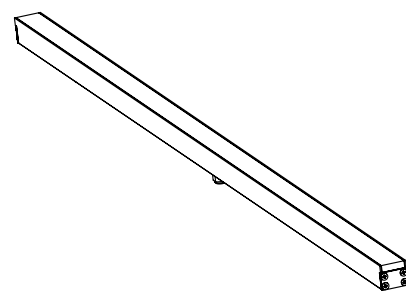
Incasso Recessed

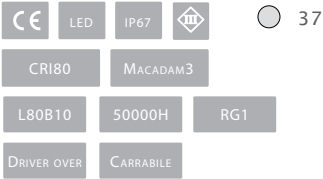


Incasso Recessed



Incasso Recessed





37

JER.5850.05 Y LED 7.5W/24V 576/522lm

Versione da 310mm, 7.5W/24V. Driver escluso.
Version 310mm, 7.5W/24V. Driver excluded.

JER.5851.05 Y LED 15W/24V 1152/1044lm

Versione da 610mm, 15W/24V. Driver escluso.
Version 610mm, 15W/24V. Driver excluded.

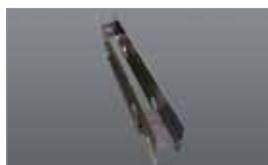
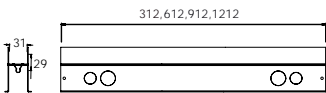
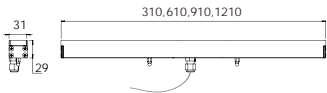
JER.5852.05 Y LED 22.5W/24V 1728/1560lm

Versione da 910mm, 22.5W/24V. Driver escluso.
Version 910mm, 22.5W/24V. Driver excluded.

JER.5853.05 Y LED 30W/24V 2304/2088lm

Versione da 1210mm, 30W/24V. Driver escluso.
Version 1210mm, 30W/24V. Driver excluded.

Y 7- 4000K
8- 3000K



JER.5850.000 - 310mm
JER.5850.001 - 610mm
JER.5850.002 - 910mm
JER.5850.003 - 1210mm

Cassaforma per incasso.
Recessed housing.



JER.5850.011

Testata di chiusura per la cassaforma.
End cap for the recessed housing.



AAA.TRSL13 - 70W / IP67
AAA.TRSL16 - 150W / IP67

LED Driver 24VDC.
LED Driver 24VDC.



JER.CA

Cavo anticaduta.
Suspension cable.



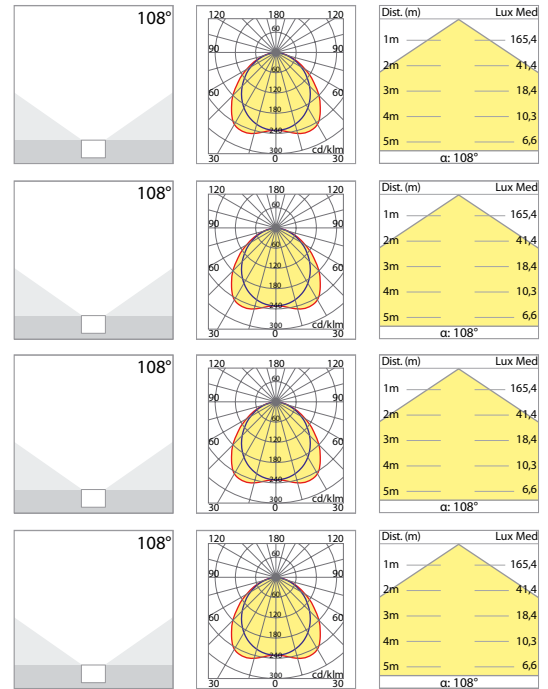
JER.5850.010

Giunto cassaforma.
Linear joint for recessed housing.



AAA.TRSL08 - 30W / IP20
AAA.TRSL09 - 75W / IP20

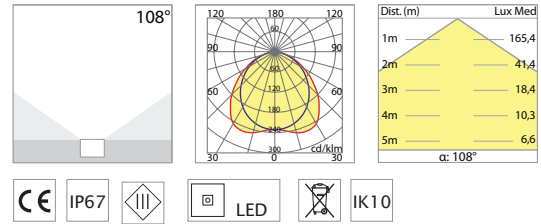
LED Driver 24VDC.
LED Driver 24VDC.



Accessori / Accessories / Accessoires

RAISE

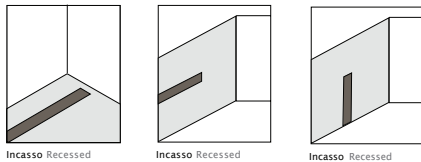
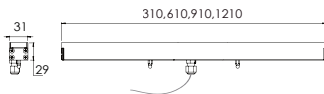
JER.585x.05Y



Colori/colours/couleurs:

● 37 grigio chiaro opaco/clear matte grey/gris clair opaque

DC 24V



Struttura in alluminio estruso.
Viteria acciaio inox A4.
Diffusore in vetro temperato di spessore 10mm per passaggio pedonale o veicolare
Disponibile in 4 versioni 310mm, 610mm, 910mm, 1210mm.
Grado di protezione IP67. Connettore rapido incluso IP67.
Testate, giunti, cassaforme e driver da ordinare separatamente come accessori.
Durata di vita: 50000h, L80B10.
Minima tolleranza di colore: 3MacAdam (3SDCM)

Body made of extruded aluminium.
A4 stainless steel screws.
Diffuser made of tempered flat glass with 10mm thickness for pedestrian and vehicle passage use.
Available in 4 versions: 310mm, 610mm, 910mm, 1210mm.
Protection degree: IP67. Rapid connector IP67 is included.
Endcaps, joints, recessed housing and driver have to be ordered separately as accessories.
Life time: 50000h, L80B10.
Minimum colour tolerance: 3MacAdam (3SDCM)

RAISE

TYPE	DESCRIPTION	POWER (W)	COLOR TEMPERATURE	NOMINAL OUTPUT (LM)	CRI	DRIVER
JER.5850. 0 5 Y.Z	Raise- L.310mm.	7.5W/24V	4000/3000K	576/522lm	>80	EXCLUDED ESCLUSO
JER.5851. 0 5 Y.Z	Raise- L.610mm.	15W/24V	4000/3000K	1152/1044lm	>80	
JER.5852. 0 5 Y.Z	Raise- L.910mm.	22.5W/24V	4000/3000K	1728/1560m	>80	
JER.5853. 0 5 Y.Z	Raise- L.1210mm.	30W/24V	4000/3000K	2304/2088lm	>80	

Y 7 - 4000K
8 - 3000K

X 5 - CRI>80
6 - CRI>90

Accessori / Accessories / Accessoires



JER.5850.000 - 310mm
JER.5850.001 - 610mm
JER.5850.002 - 910mm
JER.5850.003 - 1210mm
Cassaforma per incasso.
Recessed housing.

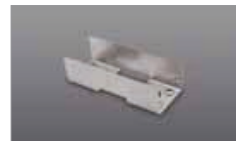


JER.CA

Cavo anticaduta.
Suspension cable.



JER.5850.011
Testata di chiusura per la cassaforma.
End cap for the recessed housing.



JER.5850.010

Giunto cassaforma.
Linear joint for recessed housing.



AAA.TRSL13 - 70W / IP67
AAA.TRSL16 - 150W / IP67
LED Driver 24VDC.
LED Driver 24VDC.



AAA.TRSL08 - 30W / IP20
AAA.TRSL09 - 75W / IP20

LED Driver 24VDC.
LED Driver 24VDC.