

K³ Writer

LED Aluminium

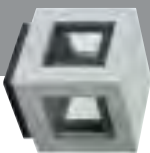
One window



Two windows



Four windows



LED AISI 316L Stainless steel

One window



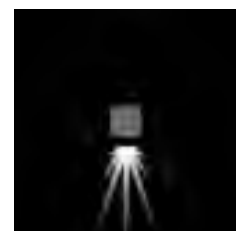
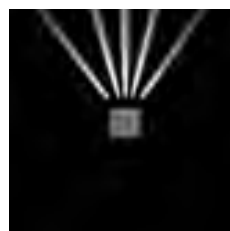
Two windows



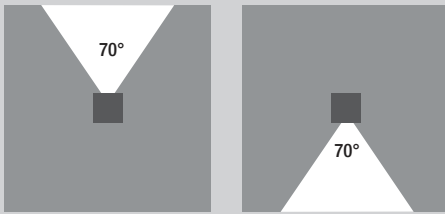
Four windows



A minimalist shape containing an innovative idea: build up your own light. The new **K³ Writer** by Goccia Illuminazione has been created to allow the maximum creative freedom: you can get infinite solutions of bright signs and colors combining three bodies, 2 converging lens, 2 thin masks (gobos) and 4 colored filters. The construction in primary Aluminium or AISI 316L Stainless Steel, the milled tempered glass in line with the frame border, the sophisticated offer of lights and colors: that's why **K³ Writer** is a good match for contemporary architecture. The double insulation in class II the waterproof index IP65 allow to orient the fixture to any direction and install on any type of surface (wall, ceiling, floor). Quite interesting the choice of the lighting sources: 20W and 35W new generation metal Halide and 4,7 W led. See the website www.goccia.com.

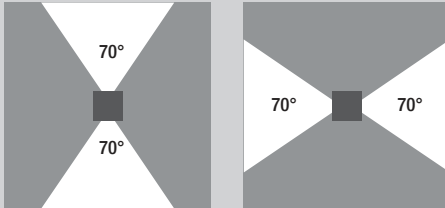


K³ Writer. Unlimited creativity

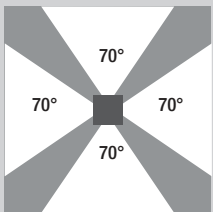


K³ Writer consists of three basic cubes with 70° angle beam light diffusion. Are completely waterproof: it means you can orient fixture and light towards any direction and install in any position – wall, floor, ceiling.

Cube with one window. Suitable to any light direction.

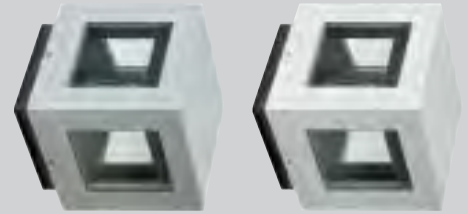


Cube with two opposite windows. To be oriented towards up/down, left/right or 45°.



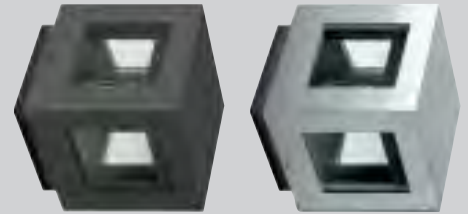
Cube with 4 windows

The lighting fittings are available in primary aluminium, finished in three attractive colors - light grey, matt white and graphite - and in AISI 316L stainless steel.



Light grey aluminium

Matt white aluminium



Graphite aluminium

AISI 316L stainless steel



Simple assembling, even if the fixture is already installed.



Lens and masks can be easily inserted: 4 screws and its oval buttonholes permit a complete and perfect focus regulation.

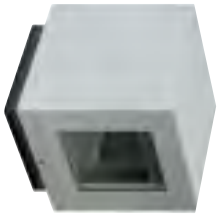


The 4 screens permit infinity combinations:

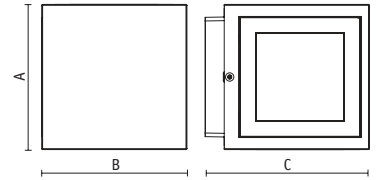
- two converging lenses in borosilicate glass for 1 or 5 blades designed to enhance its lighting effects
- two thin masks (gobos)
- 4 dichroic color filters



Inside the fixture is designed to guarantee the best light efficiency. Completely black to avoid any unwanted flare.



- Aluminium housing
- Milled and tempered glass - frame level
- 1/2/4 windows
- Electronic ballast inside for 20W and 35W metal halide
- 1/2/4 led units 500mA 4,7W 400 lumen each
- Color rendering CRI 85
- 220-250V 50-60Hz led driver inside
- Life: 50.000 h with max decreasing of 30%
- IP 65 ⚡ ⚡ - Class II
- Made according to EN 60598-1:08+A11:09
- European standards CE



70°

70°



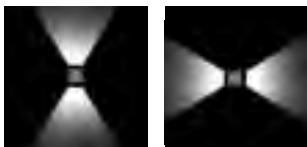
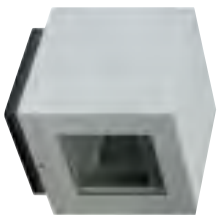
70°

70°

Colours **GR** **GM** **BI**

CODE NO.	Lamp	W	Lumen	A	B	C
1001 *	GU 6,5	20		160	160	182
1002 *	GU 6,5	35		160	160	182
1004 *	Led	1 x 4,7	400	160	160	182

Without lamps for 20W and 35W metal halide. Led included for 1004. Tonality 3500K. Other tonality on request.



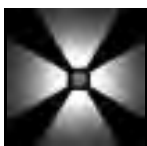
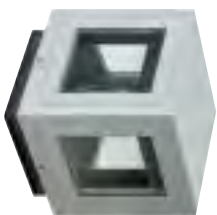
2x70°

2x70°

Colours **GR** **GM** **BI**

CODE NO.	Lamp	W	Lumen	A	B	C
1006 *	GU 6,5	20		160	160	182
1007 *	GU 6,5	35		160	160	182
1008 *	Led	2 x 4,7	800	160	160	182

Without lamps for 20W and 35W metal halide. 2 Led included for 1008. Tonality 3500K. Other tonality on request.



4x70°

Colours **GR** **GM** **BI**

CODE NO.	Lamp	W	Lumen	A	B	C
1020 *	GU 6,5	20		160	160	182
1021 *	GU 6,5	35		160	160	182
1022 *	Led	4 x 4,7	1600	160	160	182

Without lamps for 20W and 35W metal halide. 4 Led included for 1022. Tonality 3500K. Other tonality on request.



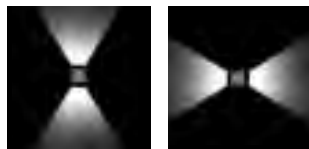
70°

70°



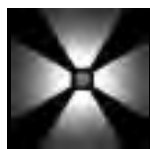
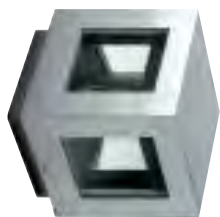
70°

70°



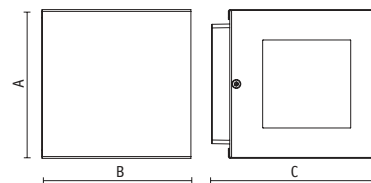
2x70°

2x70°



4x70°

- AISI 316L Stainless Steel structure
- Die-cast primary Aluminium inside
- 1/2/4 windows
- Electronic ballast inside for 20W and 35W metal halide
- 1/2/4 led units 500mA 4,7W 400 lumen each
- Color rendering CRI 85
- 220-250V 50-60Hz led driver inside
- Life: 50.000 h with max decreasing of 30%
- IP 65 ⚡ ⚡ - Class II
- Made according to EN 60598-1:08+A11:09 European standards C €



Colours **IN**

CODE NO.		Lamp	W	Lumen	A	B	C
1011	*	GU 6,5	20		164	164	186
1012	*	GU 6,5	35		164	164	186
1014	*	Led	1 x 4,7	400	164	164	186

Without lamps for 20W and 35W metal halide. Led included for 1014. Tonality 3500K. Other tonality on request.

Colours **IN**

CODE NO.		Lamp	W	Lumen	A	B	C
1016	*	GU 6,5	20		164	164	186
1017	*	GU 6,5	35		164	164	186
1018	*	Led	2 x 4,7	800	164	164	186

Without lamps for 20W and 35W metal halide. 2 Led included for 1018. Tonality 3500K. Other tonality on request.

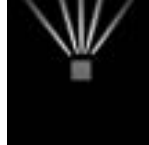
Colours **IN**

CODE NO.		Lamp	W	Lumen	A	B	C
1031	*	GU 6,5	20		164	164	186
1032	*	GU 6,5	35		164	164	186
1033	*	Led	4 x 4,7	1600	164	164	186

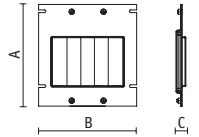
Without lamps for 20W and 35W metal halide. 4 Led included for 1033. Tonality 3500K. Other tonality on request.

Lens

- Converging lens for 1 or 5 blades
- Pure borosilicate glass
- Screws/oval buttonholes connection for side regulation
- Adjustable plate to reduce the light length if necessary
- Black steel holding frame



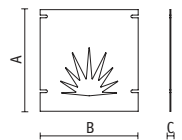
CODE NO.	Description	A	B	C
1091	Lens for 1 blade	108	113	8



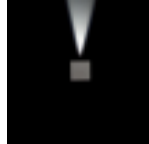
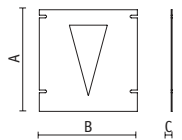
CODE NO.	Description	A	B	C
1092	Lens for 5 blades	108	113	8

Thin masks (gobos)

- Thin steel masks to shape the light
- Color black



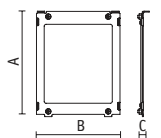
CODE NO.	Description	A	B	C
1093	Leaf shape	108	113	1



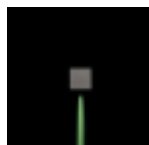
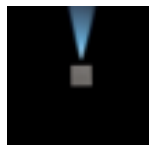
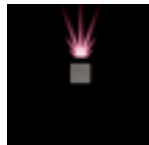
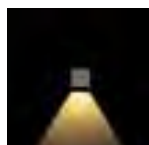
CODE NO.	Description	A	B	C
1095	30° shape	108	113	1

Color filters

- Dichroic finish
- Color and glass amalgam system
- Black steel frame
- 1 filter for 1 window



Colours RO AR BL VE



CODE NO.	Description	A	B	C
1096 *	Dichroic filter	108	113	4